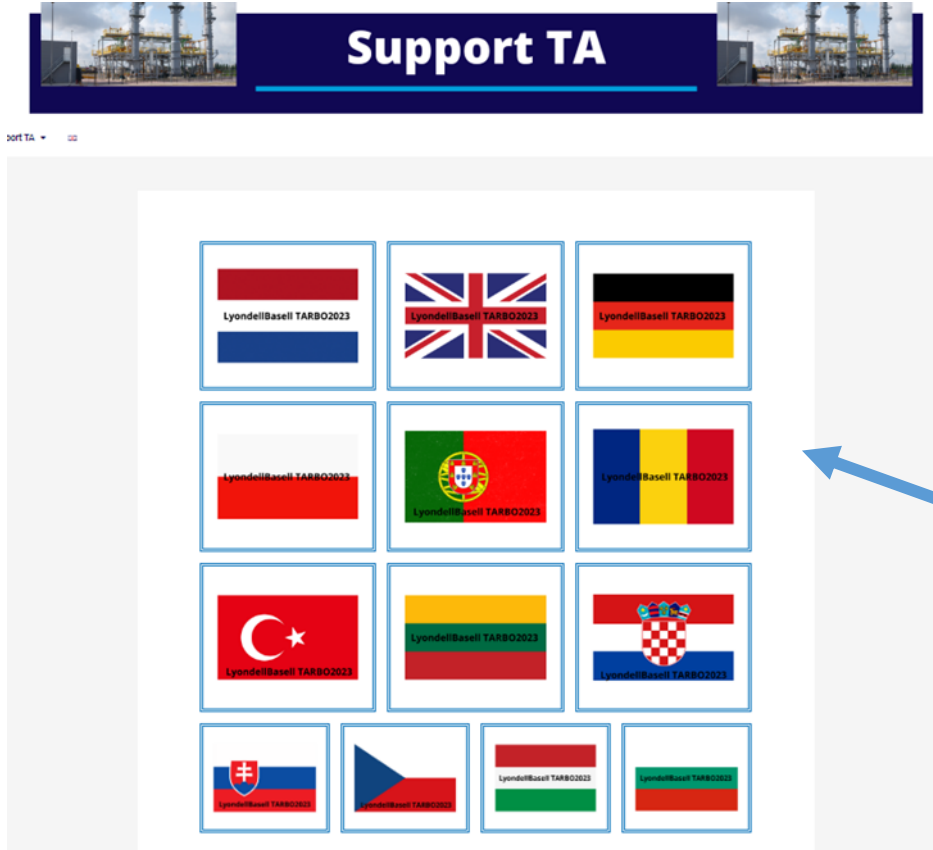


LyondellBasell TARBO2023 – Instruction

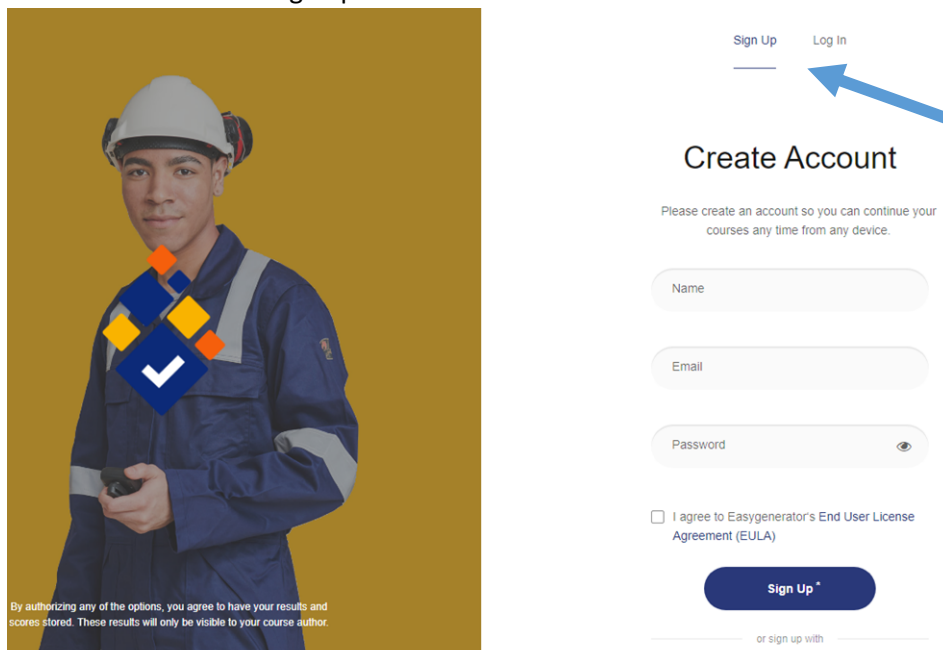
Following the theory of the LyondellBasell TARBO2023 – Instruction is mandatory for every participant.

<https://support-ta.nl/lyondellbasell-tarbo2023/>

1. Choose your preferred language by clicking on the text next to the flag



2. Then click on the text Sign up' to create an account



3. The instruction will be started, click on 'start' to begin. A brief explanation of the system follows.



Regional Safety Center

Voortgang 0%

Training afronden

Of

Neem pauze en ga later verder

1. Start 0% Start

2. Huisregels 0% Start

3. PBM's 0% Start

4. Life saving rules 0% Start



Regional Safety Center

1. Start 2/2

Start

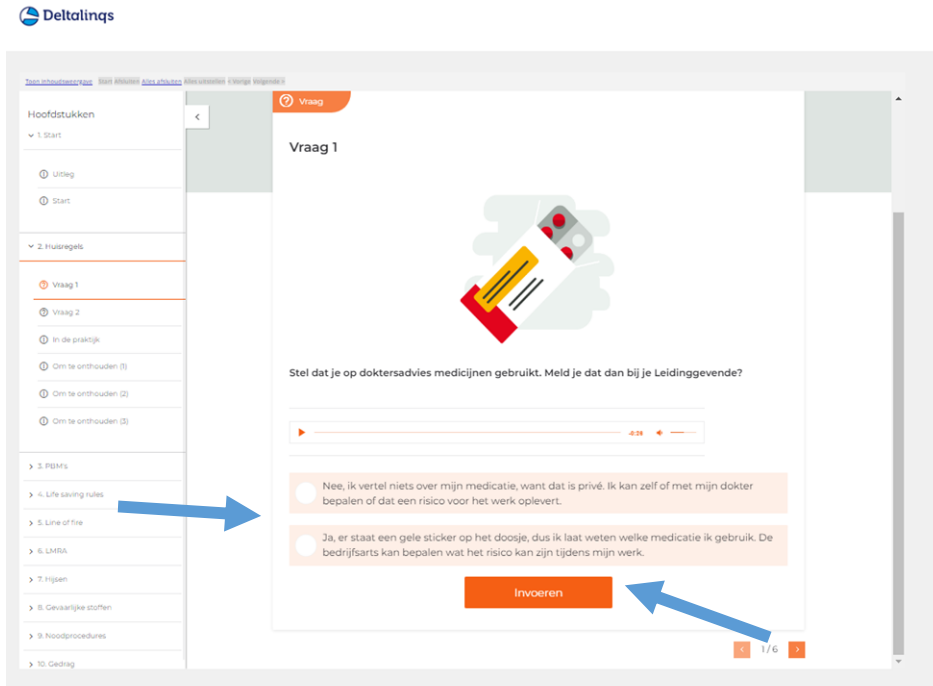
In deze training staat een werkdag van Felipe centraal.

0:00 | 0:30 Noordhoff

Volgende

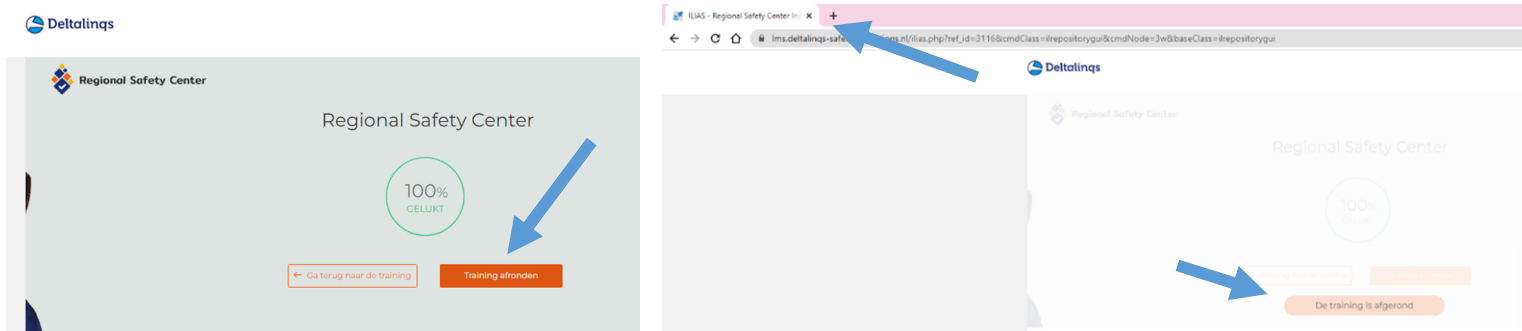
4. All videos and questions must be viewed and answered in order to complete the instruction.

- Click on 'next' to continue to the next section
- Select the 'correct answer' by clicking on it
- Click on 'enter'



The instruction is completed when all parts have been viewed and the score is at 100%

d. Then click on 'Complete training'



5. A new screen opens with the message 'the training has been completed'. The instruction has been completed and the page can be closed with the 'x'.
6. A Certificate will be issued after completing the instruction.
The instruction is tested by means of a test the RDM Training Plant or by the licensee holder.
If the theory is not passed, it is not possible to participate in the practical assessment.