

Personal protection equipment (PPE)

There are various PPE zones on the Botlek industrial estate.

GREEN	PPE-free
BLUE	Helmet, safety goggles with side-shields, S3 safety shoes, fireproof and antistatic clothing, carry protective gloves with you, Emergency escape mask
RED	Blue zone + additional requirements (shown on the signs) * Hearing protection (plant) * Life jacket (jetty) * Wear protective gloves

Additional PPE must be used if prescribed, depending on the nature of the work (if any).



Emergency instructions

In the event of an emergency at the workplace you must:

Telephone 2222 (internal phone) and warn Operations (010-4389740).

State your name, the location, what has happened and the number of casualties.

You should report dangerous situations to:

- Your host or
- the Shin-Etsu central control room (T 010-4389740) of
- using the emergency number 2222.

These are our Life-Saving Rules:

- Work with a valid Permit to Work if required
- Ensure that equipment is isolated before working on it
- Use fall protection when working at heights
- Ask for permission before disabling safety equipment
- Only enter a confined space with a valid Permit to Work
- Wear a seat belt in vehicles if there is one
- Ensure that moving machinery is shielded
- Do not use alcohol or drugs at work
- Golden Principle**
Stop working if it is not safe

Alarm

In the event of an alarm a continuous two-tone klaxon will be activated. You must:

- Obey any instructions given over the public address system.
- Stop working, switch off electrical equipment and motors and extinguish any naked flames.
- Walk to one of the assembly points at right angles to the wind direction.
- Avoid using the lifts.
- Wait at an assembly point until Operations have checked the licence registration list and obey any further instructions.

Alarm test:

Every Monday at 12:00 noon

Welcome to Shin-Etsu PVC B.V.

Safety Booklet Botlek



Keep this booklet with you at all times.
March 2023

Shin-Etsu

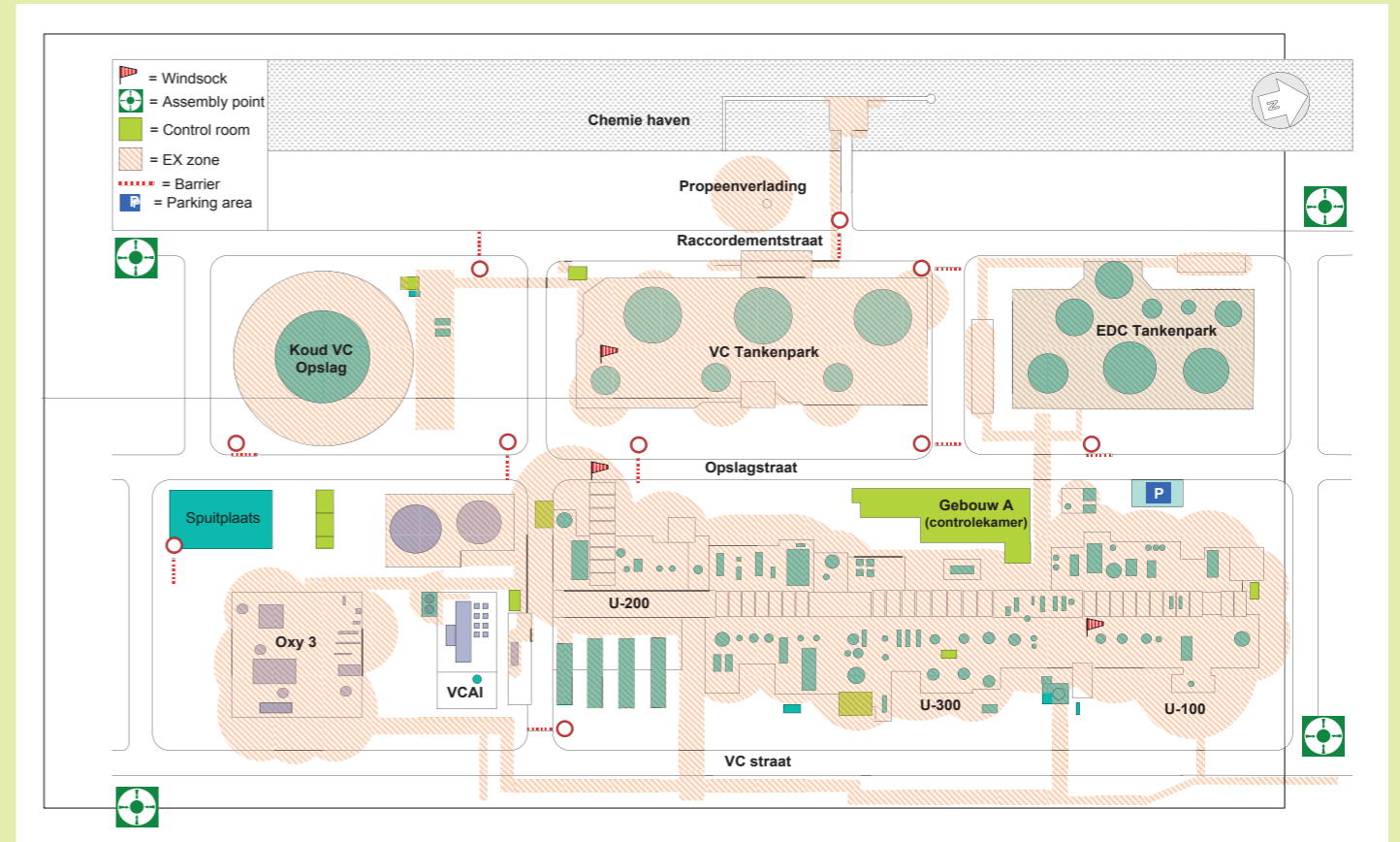
Welplaatweg 12
Havennummer 4150
3197 KS Rotterdam Botlek

Not permitted:

- Naked flames and smoking, except where indicated or if permitted under a licence.
- Using mobile phones in the plant unless explosion-proof.
- Using the Shin-Etsu IT infrastructure without permission.
- Disseminating confidential Shin-Etsu information without permission.
- Visitors: entering the plant unescorted by your host!
- Removing goods or materials without the appropriate pass.
- Using supplementary breathing protection unshaved.
- Independent operation of process equipment (this may only be done by or under the supervision of an operator)

General safety rules in addition to the LSR:

- Comply with the traffic rules.
- Strictly observe road blocks, alarms and stop signals.
- Use lighting also during the daytime.
- Park only in the parking bays.
- Use the prescribed personal protection equipment.



In case of alarm

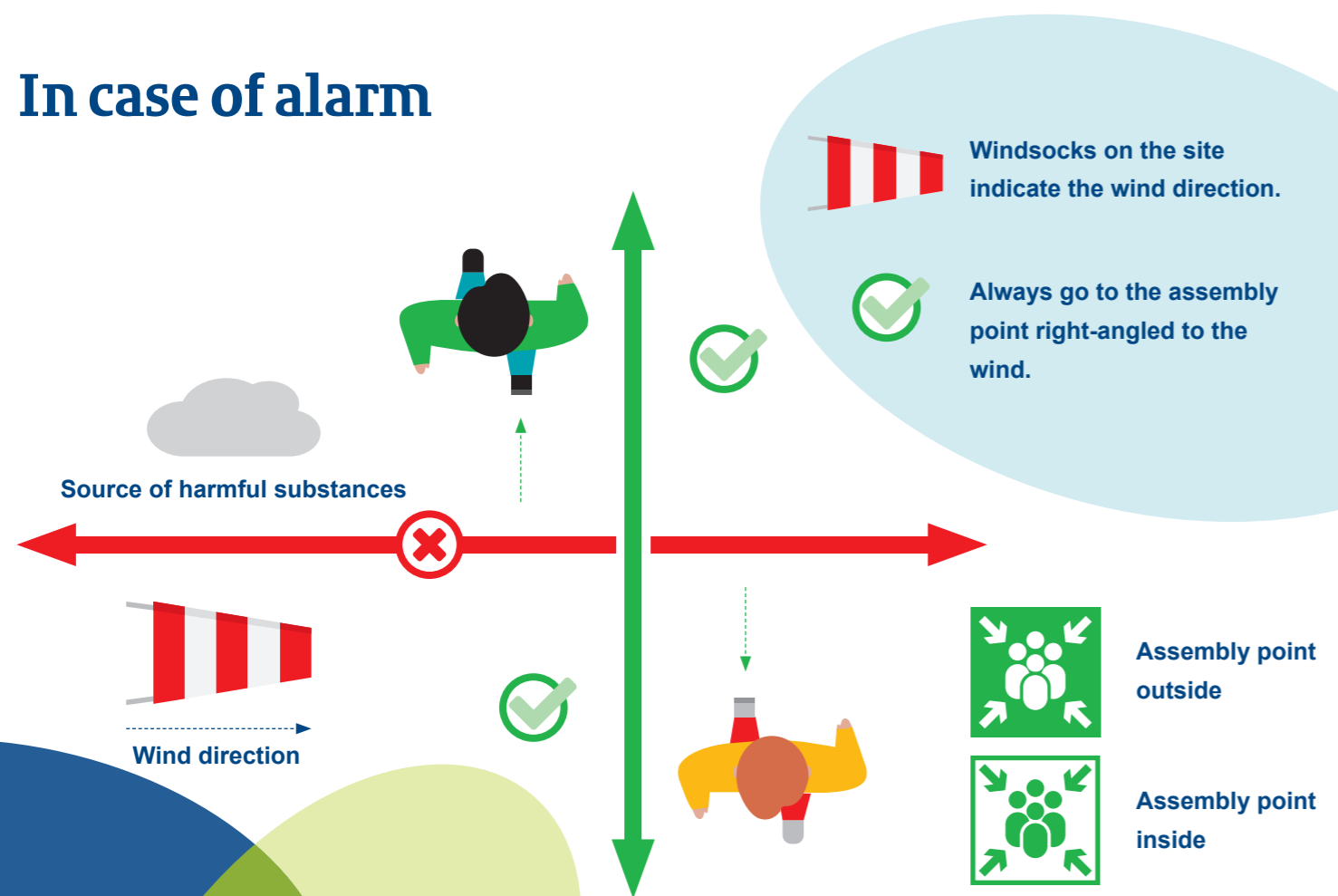


Table of Process Materials

Name of process material	Description	Particular hazard(s)	Fiche
Vinyl chloride (VC)	Liquid condensed gas. The liquid 'boils' when it escapes, forming ice. Has a sweet, not unpleasant odour.	1,5*	C-0044
1,2-dichloroethane EDC)	Clear liquid (like water), heavier than water and forms 'liquid bubbles' in water. Has a sickly odour.	1,5*	C-0013
Hydrochloric acid gas/liquid	Looks like steam (water vapour). Causes shortness of breath. Causes a tingling sensation.	2,3	C-0047
Chlorine	Green gas. Tingling sensation. Causes shortness of breath.	2	C-0010
Ammonia	Clear gas. Causes suffocation. Smells like ammonia.	2	C-0004
Light Ends (LE)	Clear liquid (like water), heavier than water and forms 'liquid bubbles' in water. Has a sickly odour.	1,5*	
Tars or Heavy Ends (HE)	Black liquid	1,5*	
Ethene	Gas	1	
Propene	Gas	1	
Natural gas	Gas	1	

*Can cause cancer.

Hazardous substances

Detailed information on the substances can be found in the safety information sheets, which are available in the control room or on the intranet.

Explosion hazard

Areas where there is a potential explosion hazard are indicated by this symbol. See also the zoning on the ground plan.

1. Flammable substances or high temperature
2. Toxic substances
3. Corrosive substances
4. Harmful substances or irritants
5. Damaging to health in the long term

EX
ATEX explosion hazard zone